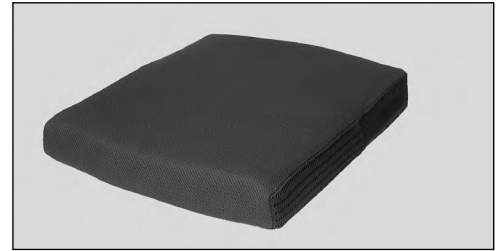


## Sitzkissen



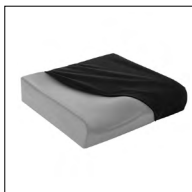
Die Rollstuhlmasse geben Hilfestellung für die Wahl der Kissengrösse

Für Sondergrössen bitte Preise und Lieferzeit erfragen

Empfohlene Verkaufspreise in CHF,  
gültig ab 01.02.2022, exkl. 7,7% MWSt

| Kostenvoranschlag   |  | Bestellung |              |
|---|--|------------|--------------|
| Rechnungsanschrift/Kundenummer  |  |            |              |
| Lieferanschrift   |  |            |              |
| Kommission  |  | Name       |              |
|   |  | .....      |              |
|   |  | Datum      | Unterschrift |
| <p>Mit der Bestellung verpflichten Sie sich, die Gebrauchsanweisungen/Serviceanleitungen von Zubehör und Produkten anderer Hersteller bei der Kombination mit einem Ottobock Produkt zusätzlich zu den Gebrauchsanweisungen/Serviceanleitungen der jeweiligen Ottobock Produkte zu beachten sowie unsere allgemeinen Geschäftsbedingungen gelesen, verstanden und akzeptiert zu haben. Darüber hinaus verpflichten Sie sich, mit der Bestellung eine eigene Konformitätsbewertung oder Zulassung entsprechend den nationalen Erfordernissen durchzuführen, wenn Sie Modifikationen oder Anbauten vornehmen, die nicht mit den Vorgaben der Ottobock Gebrauchsanweisungen/Serviceanleitungen übereinstimmen.</p> |  |            |              |

## Sitzkissen



**Terra**



**Terra Aquos**



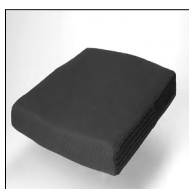
**Terra Flair**



**Inkontinenzschutz**



**Cloud**



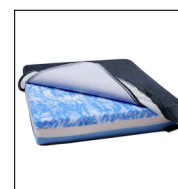
**Evolight**



**Cubic Foam**



**Livo**



**Evoflair**



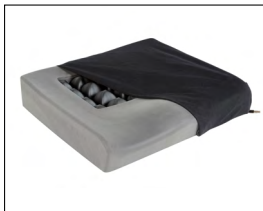
|  |  |                   |
|--|--|-------------------|
| <b>Terra</b>   | <b>Tarif-Ziffer 70.142.000 bzw. 80.642.000</b> | <b>CHF 313.00</b> |
| Funktionshöhe:<br>Oberschenkelvertiefung: 6 cm<br>Sitzbeinbereich: 7 cm<br>Randbereich: 9,5 cm |  |                   |
| max. Benutzergewicht: 150 kg   |  |                   |

| Artikelnummer | Beschreibung (cm)  | RS Breite (cm) | RS Tiefe (cm) |
|---------------|--------------------|----------------|---------------|
| 476C00=SK631  | Terra, 35,5 x 35,5 | 35-37          | 34-36         |
| 476C00=SK608  | Terra, 35,5 x 40,5 | 35-37          | 37-39         |
| 476C00=SK606  | Terra, 38,0 x 40,5 | 38-39          | 37-39         |
| 476C00=SK601  | Terra, 40,5 x 40,5 | 40-41          | 37-39         |
| 476C00=SK640  | Terra, 40,5 x 43,0 | 40-41          | 40-42         |
| 476C00=SK604  | Terra, 40,5 x 45,5 | 40-41          | 43-45         |
| 476C00=SK632  | Terra, 40,5 x 50,5 | 40-41          | 46-48         |
| 476C00=SK633  | Terra, 43,0 x 40,5 | 42-43          | 37-39         |
| 476C00=SK638  | Terra, 43,0 x 43,0 | 42-43          | 40-42         |
| 476C00=SK607  | Terra, 43,0 x 45,5 | 42-43          | 43-45         |
| 476C00=SK634  | Terra, 43,0 x 50,5 | 42-43          | 46-48         |
| 476C00=SK603  | Terra, 45,5 x 40,5 | 44-47          | 37-39         |
| 476C00=SK639  | Terra, 45,5 x 43,0 | 44-47          | 40-42         |
| 476C00=SK602  | Terra, 45,5 x 45,5 | 44-47          | 43-45         |
| 476C00=SK635  | Terra, 45,5 x 50,5 | 44-47          | 46-48         |
| 476C00=SK636  | Terra, 50,5 x 40,5 | 48-52          | 37-39         |
| 476C00=SK605  | Terra, 50,5 x 45,5 | 48-52          | 43-45         |
| 476C00=SK637  | Terra, 50,5 x 50,5 | 48-52          | 46-48         |



|  |   |                   |
|--|---|-------------------|
| <b>Terra Aquos</b>   | Tarif-Ziffer 70.142.000 bzw. 80.642.000 | <b>CHF 359.00</b> |
| Funktionshöhe:<br>Oberschenkelvertiefung: 6 cm<br>Sitzbeinbereich: 7 cm<br>Randbereich: 9,5 cm |   |                   |
| max. Benutzergewicht: 150 kg   |   |                   |

| Artikelnummer | Beschreibung (cm)        | RS Breite (cm) | RS Tiefe (cm) |
|---------------|--------------------------|----------------|---------------|
| 476C00=SK681  | Terra Aquos, 35,5 x 35,5 | 35-37          | 34-36         |
| 476C00=SK658  | Terra Aquos, 35,5 x 40,5 | 35-37          | 37-39         |
| 476C00=SK656  | Terra Aquos, 38,0 x 40,5 | 38-39          | 37-39         |
| 476C00=SK651  | Terra Aquos, 40,5 x 40,5 | 40-41          | 37-39         |
| 476C00=SK690  | Terra Aquos, 40,5 x 43,0 | 40-41          | 40-42         |
| 476C00=SK654  | Terra Aquos, 40,5 x 45,5 | 40-41          | 43-45         |
| 476C00=SK682  | Terra Aquos, 40,5 x 50,5 | 40-41          | 46-48         |
| 476C00=SK683  | Terra Aquos, 43,0 x 40,5 | 42-43          | 37-39         |
| 476C00=SK688  | Terra Aquos, 43,0 x 43,0 | 42-43          | 40-42         |
| 476C00=SK657  | Terra Aquos, 43,0 x 45,5 | 42-43          | 43-45         |
| 476C00=SK684  | Terra Aquos, 43,0 x 50,5 | 42-43          | 46-48         |
| 476C00=SK653  | Terra Aquos, 45,5 x 40,5 | 44-47          | 37-39         |
| 476C00=SK689  | Terra Aquos, 45,5 x 43,0 | 44-47          | 40-42         |
| 476C00=SK652  | Terra Aquos, 45,5 x 45,5 | 44-47          | 43-45         |
| 476C00=SK685  | Terra Aquos, 45,5 x 50,5 | 44-47          | 46-48         |
| 476C00=SK686  | Terra Aquos, 50,5 x 40,5 | 48-52          | 37-39         |
| 476C00=SK655  | Terra Aquos, 50,5 x 45,5 | 48-52          | 43-45         |
| 476C00=SK687  | Terra Aquos, 50,5 x 50,5 | 48-52          | 46-48         |



|  |  |                   |
|--|--|-------------------|
| <b>Terra Flair</b>   | <b>Tarif-Ziffer 70.143.000 bzw. 80.643.000</b> | <b>CHF 628.00</b> |
| Funktionshöhe:<br>Oberschenkelvertiefung: 6 cm<br>Sitzbeinbereich: 7 cm<br>Randbereich: 9,5 cm |  |                   |
| max. Benutzergewicht: 150 kg   |  |                   |

| Artikelnummer | Beschreibung (cm)        | RS Breite (cm) | RS Tiefe (cm) |
|---------------|--------------------------|----------------|---------------|
| 476C00=SK878  | Terra Flair, 35,5 x 40,5 | 35-37          | 37-39         |
| 476C00=SK876  | Terra Flair, 38,0 x 40,5 | 38-39          | 37-39         |
| 476C00=SK871  | Terra Flair, 40,5 x 40,5 | 40-41          | 37-39         |
| 476C00=SK879  | Terra Flair, 40,5 x 43,0 | 40-41          | 40-42         |
| 476C00=SK874  | Terra Flair, 40,5 x 45,5 | 40-41          | 43-45         |
| 476C00=SK882  | Terra Flair, 40,5 x 50,5 | 40-41          | 46-48         |
| 476C00=SK883  | Terra Flair, 43,0 x 40,5 | 42-43          | 37-39         |
| 476C00=SK888  | Terra Flair, 43,0 x 43,0 | 42-43          | 40-42         |
| 476C00=SK877  | Terra Flair, 43,0 x 45,5 | 42-43          | 43-45         |
| 476C00=SK884  | Terra Flair, 43,0 x 50,5 | 42-43          | 46-48         |
| 476C00=SK873  | Terra Flair, 45,5 x 40,5 | 44-47          | 37-39         |
| 476C00=SK889  | Terra Flair, 45,5 x 43,0 | 44-47          | 40-42         |
| 476C00=SK872  | Terra Flair, 45,5 x 45,5 | 44-47          | 43-45         |
| 476C00=SK885  | Terra Flair, 45,5 x 50,5 | 44-47          | 46-48         |
| 476C00=SK886  | Terra Flair, 50,5 x 40,5 | 48-52          | 37-39         |
| 476C00=SK875  | Terra Flair, 50,5 x 45,5 | 48-52          | 43-45         |
| 476C00=SK887  | Terra Flair, 50,5 x 50,5 | 48-52          | 46-48         |



**Inkontinenzschutz**

Tarif-Ziffer 70.145.000 bzw. 80.645.000

Passend für die Modelle: **Terra, Terra Aquos und Terra Flair.**

Passt unter den Textilbezug, direkt um den Schaumstoff herum.

| Artikelnummer | Beschreibung (cm)                                  | V-Preis |
|---------------|--|---------|
| 476C00=SK461  | Inkontinenzschutz, 35,5 x 35,5                     | 46.00   |
| 476C00=SK450  | Inkontinenzschutz, 35,5 x 40,5                     | 46.00   |
| 476C00=SK451  | Inkontinenzschutz, 38,0 x 40,5                     | 46.00   |
| 476C00=SK452  | Inkontinenzschutz, 40,5 x 40,5                     | 46.00   |
| 476C00=SK458  | Inkontinenzschutz, 40,5 x 43,0                     | 46.00   |
| 476C00=SK453  | Inkontinenzschutz, 40,5 x 45,5 (auch für ST 43 cm) | 46.00   |
| 476C00=SK462  | Inkontinenzschutz, 40,5 x 50,5                     | 46.00   |
| 476C00=SK463  | Inkontinenzschutz, 43,0 x 40,5                     | 46.00   |
| 476C00=SK459  | Inkontinenzschutz, 43,0 x 43,0                     | 46.00   |
| 476C00=SK454  | Inkontinenzschutz, 43,0 x 45,5 (auch für ST 43 cm) | 46.00   |
| 476C00=SK464  | Inkontinenzschutz, 43,0 x 50,5                     | 46.00   |
| 476C00=SK455  | Inkontinenzschutz, 45,5 x 40,5                     | 46.00   |
| 476C00=SK456  | Inkontinenzschutz, 45,5 x 45,5 (auch für ST 43 cm) | 46.00   |
| 476C00=SK460  | Inkontinenzschutz, 45,5 x 43,0                     | 46.00   |
| 476C00=SK465  | Inkontinenzschutz, 45,5 x 50,5                     | 46.00   |
| 476C00=SK466  | Inkontinenzschutz, 50,5 x 40,5                     | 46.00   |
| 476C00=SK457  | Inkontinenzschutz, 50,5 x 45,5 (auch für ST 43 cm) | 46.00   |
| 476C00=SK467  | Inkontinenzschutz, 50,5 x 50,5                     | 46.00   |
| 476C00=SK468  | Inkontinenzschutz, 58 x 58                         | 46.00   |

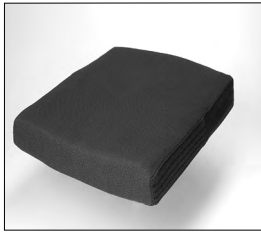


|   |  |                            |
|---|--|----------------------------|
| <b>Cloud</b>  | <b>Tarif-Ziffer 70.143.000 bzw. 80.643.000</b> | <b>CHF 943.00</b>          |
| Oberschenkelvertiefung: anpassbar<br>Sitzbeinbereich: anpassbar<br>Randbereich: 11 cm |  |                            |
| max. Benutzergewicht: 250 kg  |  | *bitte Lieferzeit anfragen |

| Artikelnummer      | Beschreibung (cm) | RS Breite (cm) | RS Tiefe (cm) |
|--------------------|-------------------|----------------|---------------|
| 476C00=FFC12x12    | Cloud 30 x 30*    | 29-32          | 29-32         |
| 476C00=FFC14x14    | Cloud 35 x 35*    | 34-36          | 34-37         |
| 476C00=FFC14x16    | Cloud 35 x 40     | 34-36          | 38-42         |
| 476C00=FFC15x15    | Cloud 38 x 38     | 37-39          | 37-40         |
| 476C00=FFC15x16    | Cloud 38 x 40     | 37-40          | 38-42         |
| 476C00=FFC16x16    | Cloud 40 x 40     | 39-41          | 38-42         |
| 476C00=FFC16x16.5  | Cloud 40 x 42     | 39-42          | 40-44         |
| 476C00=FFC16x18    | Cloud 40 x 46     | 39-43          | 42-48         |
| 476C00=FFC16.5x16  | Cloud 42 x 40     | 41-43          | 38-42         |
| 476C00=FC16.5x16.5 | Cloud 42 x 42     | 41-44          | 40-44         |
| 476C00=FFC17x17    | Cloud 43 x 43     | 42-44          | 42-46         |
| 476C00=FFC17x18    | Cloud 43 x 46     | 42-45          | 42-48         |
| 476C00=FC17.5x16.5 | Cloud 44 x 42     | 43-45          | 40-44         |
| 476C00=FFC18x16    | Cloud 46 x 40     | 45-47          | 38-42         |
| 476C00=FFC18x16.5  | Cloud 46 x 42     | 45-47          | 40-44         |
| 476C00=FFC18x18    | Cloud 46 x 46     | 45-47          | 42-48         |
| 476C00=FFC18x20    | Cloud 46 x 50     | 45-47          | 48-52         |
| 476C00=FFC19x18    | Cloud 48 x 46     | 48-50          | 42-48         |
| 476C00=FFC20X16    | Cloud 50 x 40*    | 48-54          | 38-42         |
| 476C00=FFC20X18    | Cloud 50 x 46     | 48-54          | 42-48         |
| 476C00=FFC22X16    | Cloud 56 x 40*    | 52-60          | 38-42         |
| 476C00=FFC22x18    | Cloud 56 x 46*    | 52-60          | 42-48         |
| 476C00=FFC22x20    | Cloud 56 x 50*    | 52-60          | 48-52         |
| 476C00=FFC24x16    | Cloud 61 x 40*    | 57-65          | 38-42         |

|                |     | Sitzbreite (mm) |       |       |         |           |       |           |         |       |       |       |       |
|----------------|-----|-----------------|-------|-------|---------|-----------|-------|-----------|---------|-------|-------|-------|-------|
|                |     | 300             | 350   | 380   | 400     | 420       | 430   | 440       | 460     | 480   | 500   | 520   | 540   |
| Sitztiefe (mm) | 300 | 12x12           |       |       |         |           |       |           |         |       |       |       |       |
|                | 350 |                 | 14x14 |       |         |           |       |           |         |       |       |       |       |
|                | 380 |                 |       | 15x15 |         |           |       |           |         |       |       |       |       |
|                | 400 |                 | 14x16 | 15x16 | 16x16   | 16.5x16   |       |           | 18x16   |       | 20x16 | 22x16 | 24x16 |
|                | 420 |                 |       |       | 16x16.5 | 16.5x16.5 |       | 17.5x16.5 | 18x16.5 |       |       |       |       |
|                | 430 |                 |       |       |         |           | 17x17 |           |         |       |       |       |       |
|                | 460 |                 |       |       | 16x18   |           | 17x18 |           | 18x18   | 19x18 | 20x18 | 22x18 |       |
|                | 500 |                 |       |       |         |           |       |           | 18x20   |       |       | 22x20 |       |

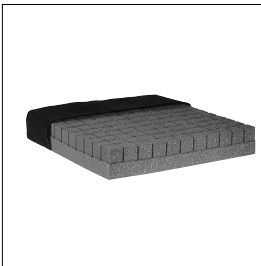
Hinweis: Die Rollstuhlmasse geben Hilfestellung für die Wahl der Kissengrösse



|  |   |                   |
|--|---|-------------------|
| <b>Evolight</b>  | <b>Tarif-Ziffer 70.142.000 bzw. 80.642.000</b>    | <b>CHF 386.00</b> |
| Funktionshöhe: Oberschenkelvertiefung: 6 cm<br>Sitzbeinbereich: 6 cm   |   |                   |
| max. Benutzergewicht: 125 kg (180 kg wenn vom Therapeuten freigegeben) |   |                   |
| <b>476C00=SK350</b>  | <b>Evolight: Breite _____ cm x Tiefe _____ cm</b> |                   |

|                |     | Sitzbreite (mm) |     |     |     |     |     |     |     |     |     |     |     |     |     |     |     |     |     |     |     |   |
|----------------|-----|-----------------|-----|-----|-----|-----|-----|-----|-----|-----|-----|-----|-----|-----|-----|-----|-----|-----|-----|-----|-----|---|
|                |     | 260             | 280 | 300 | 320 | 340 | 360 | 380 | 400 | 420 | 440 | 460 | 480 | 500 | 520 | 540 | 560 | 580 | 600 | 610 | 620 |   |
| Sitztiefe (mm) | 280 | ●               | ●   | ●   | ●   | ●   | ●   |     |     |     |     |     |     |     |     |     |     |     |     |     |     |   |
|                | 300 | ●               | ●   | ●   | ●   | ●   | ●   |     |     |     |     |     |     |     |     |     |     |     |     |     |     |   |
|                | 320 | ●               | ●   | ●   | ●   | ●   | ●   |     |     |     |     |     |     |     |     |     |     |     |     |     |     |   |
|                | 340 | ●               | ●   | ●   | ●   | ●   | ●   | ●   | ●   | ●   | ●   | ●   | ●   | ●   |     |     |     |     |     |     |     |   |
|                | 360 | ●               | ●   | ●   | ●   | ●   | ●   | ●   | ●   | ●   | ●   | ●   | ●   | ●   |     |     |     |     |     |     |     |   |
|                | 380 | ●               | ●   | ●   | ●   | ●   | ●   | ●   | ●   | ●   | ●   | ●   | ●   | ●   |     |     |     |     |     |     |     |   |
|                | 400 |                 |     |     | ●   | ●   | ●   | ●   | ●   | ●   | ●   | ●   | ●   | ●   | ●   | ●   | ●   | ●   | ●   | ●   | ●   | ● |
|                | 420 |                 |     |     | ●   | ●   | ●   | ●   | ●   | ●   | ●   | ●   | ●   | ●   | ●   | ●   | ●   | ●   | ●   | ●   | ●   | ● |
|                | 440 |                 |     |     | ●   | ●   | ●   | ●   | ●   | ●   | ●   | ●   | ●   | ●   | ●   | ●   | ●   | ●   | ●   | ●   | ●   | ● |
|                | 460 |                 |     |     | ●   | ●   | ●   | ●   | ●   | ●   | ●   | ●   | ●   | ●   | ●   | ●   | ●   | ●   | ●   | ●   | ●   | ● |
|                | 480 |                 |     |     | ●   | ●   | ●   | ●   | ●   | ●   | ●   | ●   | ●   | ●   | ●   | ●   | ●   | ●   | ●   | ●   | ●   | ● |
|                | 500 |                 |     |     |     |     |     |     |     |     |     |     |     |     | ●   | ●   | ●   | ●   | ●   | ●   | ●   | ● |
|                | 520 |                 |     |     |     |     |     |     |     |     |     |     |     |     | ●   | ●   | ●   | ●   | ●   | ●   | ●   | ● |
|                | 540 |                 |     |     |     |     |     |     |     |     |     |     |     |     | ●   | ●   | ●   | ●   | ●   | ●   | ●   | ● |
|                | 560 |                 |     |     |     |     |     |     |     |     |     |     |     |     | ●   | ●   | ●   | ●   | ●   | ●   | ●   | ● |

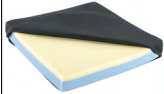
● Normgrößen    ■ Sondergrößen – Angaben zu Preis und Lieferzeit auf Anfrage.



|   |   |                   |
|---|---|-------------------|
| <b>Cubic Foam</b>   | <b>Tarif-Ziffer 70.142.000 bzw. 80.642.000</b>      | <b>CHF 186.00</b> |
| Funktionshöhe:<br>Oberschenkelvertiefung: 5 cm<br>Sitzbeinbereich: 5 cm |   |                   |
| max. Benutzergewicht: 150 kg  |   |                   |
| <b>476C00=SK100</b>   | <b>Cubic Foam: Breite _____ cm x Tiefe _____ cm</b> |                   |

|                |     | Sitzbreite (mm) |     |     |     |     |     |     |     |     |     |     |     |     |     |     |     |     |     |   |   |   |
|----------------|-----|-----------------|-----|-----|-----|-----|-----|-----|-----|-----|-----|-----|-----|-----|-----|-----|-----|-----|-----|---|---|---|
|                |     | 260             | 280 | 300 | 320 | 340 | 360 | 380 | 400 | 420 | 440 | 460 | 480 | 500 | 520 | 540 | 560 | 580 | 600 |   |   |   |
| Sitztiefe (mm) | 280 | ●               | ●   | ●   | ●   | ●   | ●   |     |     |     |     |     |     |     |     |     |     |     |     |   |   |   |
|                | 300 | ●               | ●   | ●   | ●   | ●   | ●   |     |     |     |     |     |     |     |     |     |     |     |     |   |   |   |
|                | 320 | ●               | ●   | ●   | ●   | ●   | ●   |     |     |     |     |     |     |     |     |     |     |     |     |   |   |   |
|                | 340 | ●               | ●   | ●   | ●   | ●   | ●   | ●   | ●   | ●   | ●   | ●   | ●   | ●   |     |     |     |     |     |   |   |   |
|                | 360 | ●               | ●   | ●   | ●   | ●   | ●   | ●   | ●   | ●   | ●   | ●   | ●   | ●   |     |     |     |     |     |   |   |   |
|                | 380 | ●               | ●   | ●   | ●   | ●   | ●   | ●   | ●   | ●   | ●   | ●   | ●   | ●   |     |     |     |     |     |   |   |   |
|                | 400 |                 |     |     | ●   | ●   | ●   | ●   | ●   | ●   | ●   | ●   | ●   | ●   | ●   | ●   | ●   | ●   | ●   | ● | ● | ● |
|                | 420 |                 |     |     | ●   | ●   | ●   | ●   | ●   | ●   | ●   | ●   | ●   | ●   | ●   | ●   | ●   | ●   | ●   | ● | ● | ● |
|                | 440 |                 |     |     | ●   | ●   | ●   | ●   | ●   | ●   | ●   | ●   | ●   | ●   | ●   | ●   | ●   | ●   | ●   | ● | ● | ● |
|                | 460 |                 |     |     | ●   | ●   | ●   | ●   | ●   | ●   | ●   | ●   | ●   | ●   | ●   | ●   | ●   | ●   | ●   | ● | ● | ● |
|                | 480 |                 |     |     | ●   | ●   | ●   | ●   | ●   | ●   | ●   | ●   | ●   | ●   | ●   | ●   | ●   | ●   | ●   | ● | ● | ● |
|                | 500 |                 |     |     |     |     |     |     |     |     |     |     |     |     | ●   | ●   | ●   | ●   | ●   | ● | ● | ● |
|                | 520 |                 |     |     |     |     |     |     |     |     |     |     |     |     | ●   | ●   | ●   | ●   | ●   | ● | ● | ● |
|                | 540 |                 |     |     |     |     |     |     |     |     |     |     |     |     | ●   | ●   | ●   | ●   | ●   | ● | ● | ● |

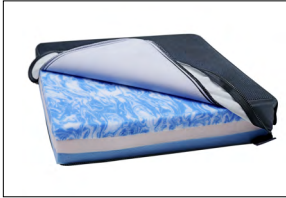
● Normgrößen    ■ Sondergrößen – Angaben zu Preis und Lieferzeit auf Anfrage.

|   |   |
|---|---|
|  | <input type="checkbox"/> <b>Sitzkissen Livo</b> |
|   | <b>Sitzkissenhöhe:</b> 50 mm                    |
|   | (max. Benutzergewicht = 125 kg)                 |

| <b>Sitzkissen komplett mit Bezug</b> |                             | <b>Tarif-Ziffer 70.141.000 bzw. 80.641.000</b> | <b>CHF 121.00</b> |
|--------------------------------------|-----------------------------|--|-------------------|
| <b>Artikelnummer</b>                 | <b>Kissengrösse</b><br>(mm) |  |                   |
| 476C00=SK1450                        | 380 x 400                   |  |                   |
| 476C00=SK1451                        | 400 x 420                   |  |                   |
| 476C00=SK1452                        | 420 x 420                   |  |                   |
| 476C00=SK1453                        | 420 x 440                   |  |                   |
| 476C00=SK1454                        | 420 x 460                   |  |                   |
| 476C00=SK1455                        | 420 x 520                   |  |                   |
| 476C00=SK1456                        | 450 x 420                   |  |                   |
| 476C00=SK1457                        | 450 x 440                   |  |                   |
| 476C00=SK1458                        | 450 x 460                   |  |                   |
| 476C00=SK1459                        | 480 x 420                   |  |                   |
| 476C00=SK1460                        | 480 x 440                   |  |                   |
| 476C00=SK1461                        | 480 x 460                   |  |                   |
| 476C00=SK1462                        | 510 x 440                   |  |                   |
| 476C00=SK1463                        | 510 x 460                   |  |                   |
| 476C00=SK1464                        | 520 x 520                   |  |                   |

| <b>Bezug</b>         |                             | <b>Tarif-Ziffer 70.145.000 bzw. 80.645.000</b> | <b>CHF 65.00</b> |
|----------------------|-----------------------------|--|------------------|
| <b>Artikelnummer</b> | <b>Kissengrösse</b><br>(mm) |  |                  |
| 477C00=SV1450        | 380 x 400                   |  |                  |
| 477C00=SV1451        | 400 x 420                   |  |                  |
| 477C00=SV1452        | 420 x 420                   |  |                  |
| 477C00=SV1453        | 420 x 440                   |  |                  |
| 477C00=SV1454        | 420 x 460                   |  |                  |
| 477C00=SV1455        | 420 x 520                   |  |                  |
| 477C00=SV1456        | 450 x 420                   |  |                  |
| 477C00=SV1457        | 450 x 440                   |  |                  |
| 477C00=SV1458        | 450 x 460                   |  |                  |
| 477C00=SV1459        | 480 x 420                   |  |                  |
| 477C00=SV1460        | 480 x 440                   |  |                  |
| 477C00=SV1461        | 480 x 460                   |  |                  |
| 477C00=SV1462        | 510 x 440                   |  |                  |
| 477C00=SV1463        | 510 x 460                   |  |                  |
| 477C00=SV1464        | 520 x 520                   |  |                  |



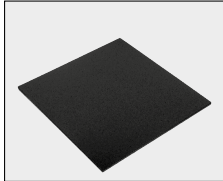


**Sitzkissen Evoflair** (max. Benutzergewicht = 200 kg)

**Sitzkissenhöhe:** 80 mm Für Sondergrössen bitte Lieferzeit erfragen.

| Sitzkissen komplett mit Bezug |              | Tarif-Ziffer 70.142.000 bzw. 80.642.000 |        |
|-------------------------------|--------------|---|--------|
| Artikelnummer                 | Kissengrösse | CHF                                     | 399.00 |
| (mm)                          |              |   |        |
| 476C00=SK1480                 | 380 x 400    |   |        |
| 476C00=SK1481                 | 400 x 400    |   |        |
| 476C00=SK1482                 | 400 x 420    |   |        |
| 476C00=SK1483                 | 410 x 460    |   |        |
| 476C00=SK1484                 | 420 x 400    |   |        |
| 476C00=SK1485                 | 420 x 420    |   |        |
| 476C00=SK1486                 | 420 x 440    |   |        |
| 476C00=SK1487                 | 420 x 460    |   |        |
| 476C00=SK1488                 | 420 x 520    |   |        |
| 476C00=SK1489                 | 450 x 420    |   |        |
| 476C00=SK1490                 | 450 x 440    |   |        |
| 476C00=SK1491                 | 450 x 460    |   |        |
| 476C00=SK1492                 | 460 x 510    |   |        |
| 476C00=SK1493                 | 480 x 420    |   |        |
| 476C00=SK1494                 | 480 x 440    |   |        |
| 476C00=SK1495                 | 480 x 460    |   |        |
| 476C00=SK1496                 | 500 x 420    |   |        |
| 476C00=SK1497                 | 510 x 440    |   |        |
| 476C00=SK1498                 | 510 x 460    |   |        |
| 476C00=SK1499                 | 520 x 520    |   |        |

| Bezug zu Evoflair-Kissen |              | Tarif-Ziffer 70.145.000 bzw. 80.645.000 | CHF 160.00 |       |
|--------------------------|--------------|---|------------|-------|
| Artikelnummer            | Kissengrösse |   |            |       |
|                          | (mm)         |   |            |       |
| 477C00=SV1480            |              | 380 x 400                               |            |       |
| 477C00=SV1481            |              | 400 x 400                               |            |       |
| 477C00=SV1482            |              | 400 x 420                               |            |       |
| 477C00=SV1483            |              | 410 x 460                               |            |       |
| 477C00=SV1484            |              | 420 x 400                               |            |       |
| 477C00=SV1485            |              | 420 x 420                               |            |       |
| 477C00=SV1486            |              | 420 x 440                               |            |       |
| 477C00=SV1487            |              | 420 x 460                               |            |       |
| 477C00=SV1488            |              | 420 x 520                               |            |       |
| 477C00=SV1489            |              | 450 x 420                               |            |       |
| 477C00=SV1490            |              | 450 x 440                               |            |       |
| 477C00=SV1491            |              | 450 x 460                               |            |       |
| 477C00=SV1492            |              | 460 x 510                               |            |       |
| 477C00=SV1493            |              | 480 x 420                               |            |       |
| 477C00=SV1494            |              | 480 x 440                               |            |       |
| 477C00=SV1495            |              | 480 x 460                               |            |       |
| 477C00=SV1496            |              | 500 x 420                               |            |       |
| 477C00=SV1497            |              | 510 x 440                               |            |       |
| 477C00=SV1498            |              | 510 x 460                               |            |       |
| 477C00=SV1499            |              | 520 x 520                               |            |       |
| <b>Ersatzteile</b>       |              |   |            |       |
| 477C00=SV1479            |              | Ventil                                  | CHF        | 37.00 |



|                   |  |  |
|-------------------|--|--|
| <b>Sitzplatte</b> |  | <b>CHF 87.00</b>                       |
| Länge: 39 cm      |  |  |
| Breite: 40 cm     |  |  |
| <b>442Q1=1</b>    |  | <b>Anzahl Sitzplatten: _____ Stück</b> |



| <b>Montageset</b> |        | <b>CHF 324.00</b> |
|-------------------|--------|-------------------|
| Artikel-Nr.       | Anzahl | Bezeichnung       |
| <b>442H3</b>      |        | <b>Montageset</b> |



**The Adjustable Seat Accessories**



| Artikel-Nr.         | Anzahl | Bezeichnung  | Preis             |
|---------------------|--------|--|-------------------|
| <b>446C1=1-7</b>    |        | <b>Spreizkeil</b><br>A: 135 mm (Länge)<br>B: 100 mm (Breite)<br>C: 100 mm (Höhe) | <b>CHF 176.00</b> |
| <b>476N52=SK001</b> |        | <b>Spreizkeil – Montageset</b>   | <b>CHF 278.00</b> |